

COMMERCIAL BUILT UP AREA						
S.NO.	POCKET	GROUND FLOOR	FIRST FLOOR	SECOND FLOOR	MUMTY	TOTAL (SQ.M.)
1	1	508.098	494.72	427.859	29.256	1459.933
2	2	266.746	242.941	242.941	25.200	777.828
TOTAL						2237.761

COMMERCIAL FAR AREA						
S.NO.	POCKET	GROUND FLOOR	FIRST FLOOR	SECOND FLOOR	TOTAL (SQ.M.)	
1	1	420.235	358.278	358.278	1136.791	
2	2	188.674	143.789	143.789	476.252	
TOTAL						1613.043

COMMERCIAL GROUND COVERAGE				
S.NO.	POCKET	GROUND COVERAGE		
1	1	508.098		
2	2	266.746		
TOTAL				774.844

CARPET AREA CALCULATION									
S.NO.	FLOORS	TOWER T-1 AREA(SQM)	TOWER T-2 AREA(SQM)	TOWER T-3 AREA(SQM)	TOWER T-4 AREA(SQM)	TOWER T-5 AREA(SQM)	TOWER T-6 AREA(SQM)	TOWER T-7 AREA(SQM)	TOTAL (SQM)
1	GROUND	437.902	437.902	437.902	437.902	437.902	329.208	229.210	2747.928
2	1st	437.902	437.902	437.902	437.902	437.902	437.902	239.816	2867.228
3	2nd	437.902	437.902	437.902	437.902	437.902	437.902	239.816	2867.228
4	3rd	437.902	437.902	437.902	437.902	437.902	437.902	239.816	2867.228
5	4th	437.902	437.902	437.902	437.902	437.902	437.902	239.816	2867.228
6	5th	437.902	437.902	437.902	437.902	437.902	437.902	239.816	2867.228
7	6th	437.902	437.902	437.902	437.902	437.902	437.902	239.816	2867.228
8	7th	437.902	437.902	437.902	437.902	437.902	437.902	239.816	2867.228
9	8th	437.902	437.902	437.902	437.902	437.902	437.902	239.816	2867.228
10	9th	437.902	437.902	437.902	437.902	437.902	437.902	119.908	2747.320
11	10th	437.902	437.902	437.902	437.902	437.902	437.902	-----	2627.412
12	11th	437.902	437.902	437.902	437.902	437.902	437.902	-----	2627.412
13	12th	437.902	437.902	437.902	437.902	437.902	437.902	-----	2627.412
14	13th	437.902	437.902	437.902	437.902	383.221	219.178	-----	2354.007
15	14th	437.902	437.902	437.902	437.902	-----	-----	-----	1751.608
TOTAL		6568.530	6568.530	6568.530	6,568.530	6,075.947	5,803.210	2,267.646	40,420.923

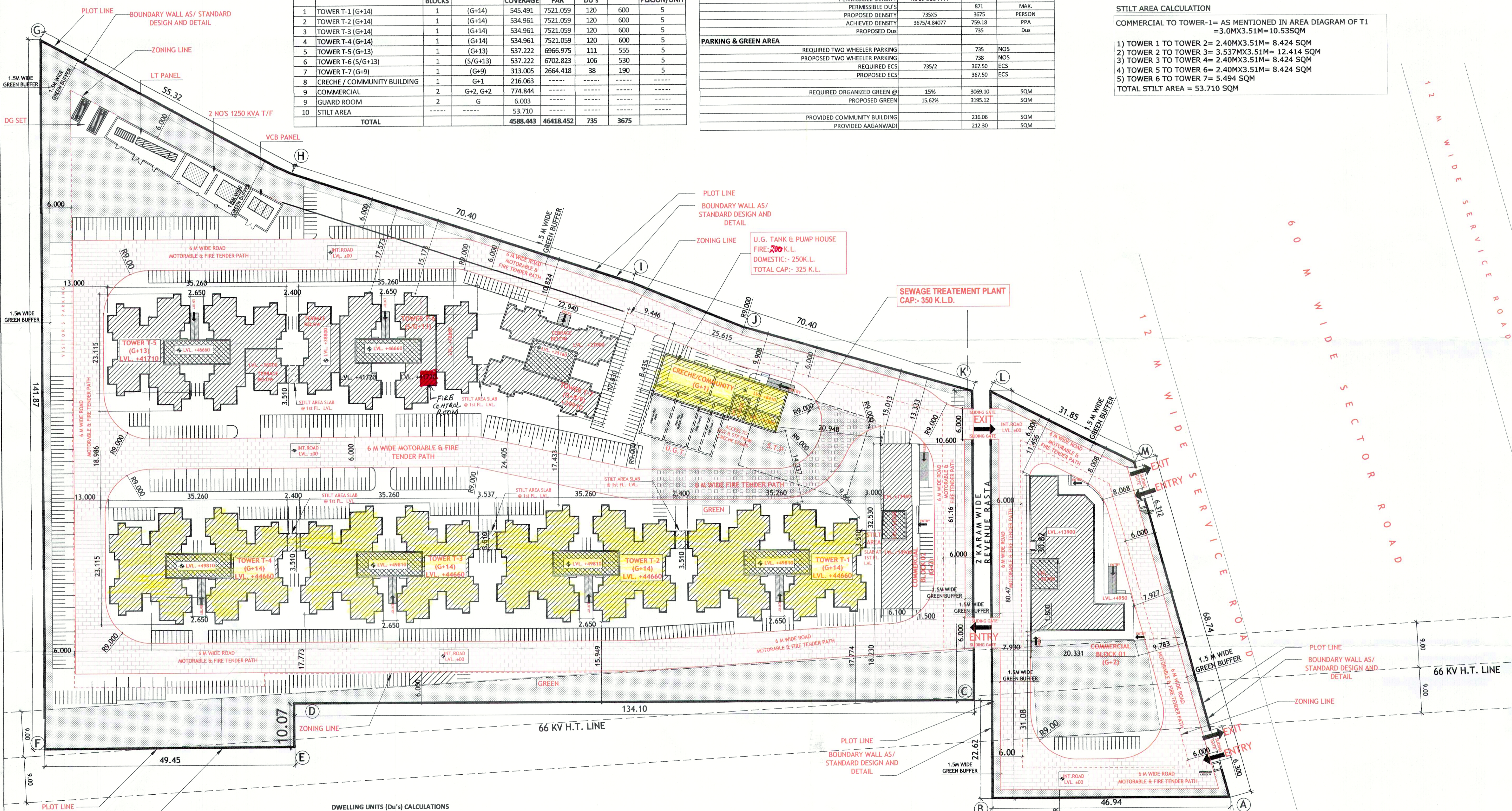
DENSITY CALCULATION (750 - 900 PPA)									
S.NO.	BUILDING BLOCKS	NO. OF BLOCKS	NO. OF FLOORS	GROUND COVERAGE	TOTAL FAR	TOTAL NO. OF DU'S	POPULATION		
1	TOWER T-1 (G+14)	1	(G+14)	545.491	7521.059	120	600		
2	TOWER T-2 (G+14)	1	(G+14)	534.961	7521.059	120	600		
3	TOWER T-3 (G+14)	1	(G+14)	534.961	7521.059	120	600		
4	TOWER T-4 (G+14)	1	(G+14)	534.961	7521.059	120	600		
5	TOWER T-5 (G+13)	1	(G+13)	537.222	6966.975	111	555		
6	TOWER T-6 (S/G+13)	1	(S/G+13)	537.222	6702.823	106	530		
7	TOWER T-7 (G+9)	1	(G+9)	313.005	2664.418	38	190		
8	CRECHE / COMMUNITY BUILDING	1	G+1	216.063	-----	-----	-----		
9	COMMERCIAL	2	G+2, G+2	774.844	-----	-----	-----		
10	GUARD ROOM	2	G	6.003	-----	-----	-----		
11	STILT AREA	-----	-----	53.710	-----	-----	-----		
TOTAL				4588.443	46418.452	735	3675		

AREA SUMMARY		
	ACRES	SQ.M.
PREVIOUS PLOT AREA (A)	4.73125	19146.659
ADDITIONAL LAND AREA(B)	0.3247	1314.01
TOTAL PLOT AREA FOR FAR	5.05595	20460.67
PREVIOUS PERMISSIBLE COMMERCIAL AREA @ 4.0% PLOT AREA(A)	0.18925	765.87
PERMISSIBLE COMMERCIAL ON ADDITIONAL LAND AREA @ 8% OF B	0.02598	105.12
TOTAL BALANCE PLOT AREA FOR RESIDENTIAL	4.84072	19589.68
GROUND COVERAGE		
PERMISSIBLE GROUND COVERAGE @ 50% OF PLOT AREA		10230.34
PROPOSED GROUND COVERAGE	22.43%	4588.443
FAR		
PERMISSIBLE FAR FOR HOUSING @ 225%	44076.79	
EXTRA FAR FOR GREEN BUILDING @ 12.00%	2350.76	
TOTAL PERMISSIBLE FAR FOR HOUSING @ PROPOSED FAR	46427.55	46418.45
PERMISSIBLE FAR FOR COMMERCIAL @ 175%	1542.23	
EXTRA FAR FOR GREEN BUILDING @ 12.00%	104.52	
TOTAL PERMISSIBLE FAR FOR COMMERCIAL @ PROPOSED FAR FOR COMMERCIAL	1876	1628.75
PROVIDED COMMUNITY BUILDING	212.30	SQM
PROVIDED AANGANWADI	212.30	SQM
DENSITY		
PERMISSIBLE DENSITY	MIN. 750 PPA	3631
PERMISSIBLE DU'S	726	MIN.
PERMISSIBLE DENSITY	MAX. 900 PPA	4357
PERMISSIBLE DU'S	971	MAX.
PROPOSED DENSITY	735K5	3675 PERSON
ACHIEVED DENSITY	3675/4.84077	759.18 PPA
PROPOSED DUS		735 DUS
PARKING & GREEN AREA		
REQUIRED TWO WHEELER PARKING	735	NOS
PROPOSED TWO WHEELER PARKING	738	NOS
REQUIRED ECS	735/2	367.50 ECS
PROPOSED ECS		367.50 ECS
REQUIRED ORGANIZED GREEN @ 15%	3069.10	SQM
PROPOSED GREEN	15.62%	3195.12 SQM
PROVIDED COMMUNITY BUILDING	212.30	SQM
PROVIDED AANGANWADI	212.30	SQM

FAR AREA CALCULATION									
S.NO.	FLOORS	TOWER-T-1 (SQM)	TOWER-T-2 (SQM)	TOWER-T-3 (SQM)	TOWER-T-4 (SQM)	TOWER-T-5 (SQM)	TOWER-T-6 (SQM)	TOWER-T-7 (SQM)	TOTAL (SQM)
1	GROUND	534.961	534.961	534.961	534.961	537.222	423.281	313.005	3413.352
2	1ST	499.007	499.007	499.007	499.007	499.024	499.024	275.565	3269.641
3	2nd	499.007	499.007	499.007	499.007	499.024	499.024	275.565	3269.641
4	3rd	499.007	499.007	499.007	499.007	499.024	499.024	275.565	3269.641
5	4th	499.007	499.007	499.007	499.007	499.024	499.024	275.565	3269.641
6	5th	499.007	499.007	499.007	499.007	499.024	499.024	275.565	3269.641
7	6th	499.007	499.007	499.007	499.007	499.024	499.024	275.565	3269.641
8	7th	499.007	499.007	499.007	499.007	499.024	499.024	275.565	3269.641
9	8th	499.007	499.007	499.007	499.007	499.024	499.024	275.565	3269.641
10	9th	499.007	499.007	499.007	499.007	499.024	499.024	146.893	3140.969
11	10th	499.007	499.007	499.007	499.007	499.024	499.024	-----	2994.076
12	11th	499.007	499.007	499.007	499.007	499.024	499.024	-----	2994.076
13	12th	499.007	499.007	499.007	499.007	499.024	499.024	-----	2994.076
14	13th	499.007	499.007	499.007	499.007	441.465	291.254	-----	2728.747
15	14th	499.007	499.007	499.007	499.007	-----	-----	-----	1996.028
TOTAL FAR		7521.059	7521.059	7521.059	7521.059	6966.975	6702.823	2664.418	46418.452

GUARD ROOM AREA CALCULATION
 AREA OF GUARD ROOM = 2 X 1.725 X 1.740
 = 6.003 SQ.M.

STILT AREA CALCULATION
 COMMERCIAL TO TOWER-1 = AS MENTIONED IN AREA DIAGRAM OF T1
 = 3.0MX3.51M = 10.535SQM
 1) TOWER 1 TO TOWER 2 = 2.40MX3.51M = 8.424 SQM
 2) TOWER 2 TO TOWER 3 = 3.537MX3.51M = 12.414 SQM
 3) TOWER 3 TO TOWER 4 = 2.40MX3.51M = 8.424 SQM
 4) TOWER 5 TO TOWER 6 = 2.40MX3.51M = 8.424 SQM
 5) TOWER 6 TO TOWER 7 = 5.494 SQM
TOTAL STILT AREA = 53.710 SQM



DWELLING UNITS (DU'S) CALCULATIONS										
S.NO.	TOWERS	UNITS	GROUND FL UNITS	EACH TYP. FL UNITS	UNITS IN TOP	TYP. FL NOS.	TOTAL TYP. FL UNITS	TOTAL UNITS IN TOWER	PER UNIT	POPULATION
1	TOWER-T-1 (G+14)	2BHK	8	8	8	14	112	120	5	600
2	TOWER-T-2 (G+14)	2BHK	8	8	8	14	112	120	5	600
3	TOWER-T-3 (G+14)	2BHK	8	8	8	14	112	120	5	600
4	TOWER-T-4 (G+14)	2BHK	8	8	8	14	112	120	5	600
5	TOWER-T-5 (G+13)	2BHK	8	8	7	12	96	111	5	555
6	TOWER-T-6 (S/G+13)	2BHK	6	8	4	12	96	106	5	530
7	TOWER-T-7 (G+9)	2BHK+STORE	4	2	2	8	32	38	5	190
TOTAL UNITS									735	3675

This is a "PROVISIONAL BUILDING PLAN" approved only for the purpose of inviting objections from the general public.

Checked and found ok for Public Health
 Constatant Engineering Services Pvt. Ltd. (C/14/1) 6.2-3-3
 NNC DESIGN INTERNATIONAL
 R.K. & ASSOCIATES

TOWER 1 TO 4 AND COMMUNITY CRECHE ALREADY APPROVED. NO CHANGE.

SUBMISSION DRAWING

CLIENT: M/S. SIGNATURE GLOBAL (INDIA) PRIVATE LIMITED
 Signature Global, 1308 Dr. Gopal Das Building, 28 Barakhamba Road C.P. New Delhi

PROJECT TITLE: REVISED BUILDING PLAN OF AFFORDABLE GROUP HOUSING COLONY FOR AN AREA MEASURING 5.05595 ACRES (4.73125 ACRES LICENCE NO. 121 OF 2019 DATED 14/09/2019 + 0.3247 ACRES LICENCE NO. 06 OF 2021 DATED 05/03/2021) IN THE REVENUE ESTATE OF VILLAGE HAYATPUR SECTOR-89 BEING DEVELOPED BY SIGNATURE INFRABUILD PVT. LTD.

ARCHITECT'S SIGNATURE: SOHIT GARG CA/94/17868

OWNERS SIGNATURE: [Signature]

DRAWING TITLE: LAYOUT PLAN

SCALE: 1:200

DATE: DEC 2020

DRG. NO.: 01